

NEW STAMP ISSUES

Museums' Artefacts Part 2 Definitive Issue



This is the continuation of the Museums' Artefacts found in the Museums on Norfolk Island.

Iron from No. 10 Quality Row Norfolk Island (15c) – No. 10 Quality Row is a Second Settlement Home built in 1844 for the Foreman of Works, and was later occupied by Pitcairn families after their arrival on Norfolk in 1856.



Mug with personal scratch mark of Thursday October Christian (60c) – Scratch markings would denote the ownership of property early in the Pitcairn settlement. Thursday October, born in Pitcairn Island in 1820 was the son of Fletcher Christian and his Tahitian wife Mauatua.



Bone Dominoes from Convict Settlement (\$1.20) – These bone dominoes were originally mounted on wood and found in the Officer's Mess, New Military Barracks from the second convict settlement on Norfolk Island.



Clay Pipes and Ceramics from the Civil Hospital (\$1.50) – The prisoners' poor diet and savage punishment routine made sickness common. The new hospital was built in 1829 on the foundation of the First Settlement hospital.



Doll Fragments from privies, Quality Row (\$1.80) – Archaeological digs from the privies in Quality Row unearthed these small doll fragments. They once belonged to the children of the officers and wives during the Second Convict Settlement.



Wooden & Shell hair items from Melanesian Mission (\$3.00) – In 1866 over 200 students came from all over Melanesia as part of The Melanesian Mission. By 1880 The Patteson Memorial Chapel (now known as St Barnabas Chapel) was completed.



Withdrawal date for FDC 22/3/2011.

Above: First Day Cover

Bureau Housekeeping

Updated credit card details

Some customers have several issues waiting to be dispatched. This generally occurs because credit card details need updating. If you have recently received a new card it may have a completely new number and expiry date from what we have on our records. To avoid any delays with processing and dispatching orders could you please inform the staff in the Bureau if you think you may be one of these customers.

Your feedback

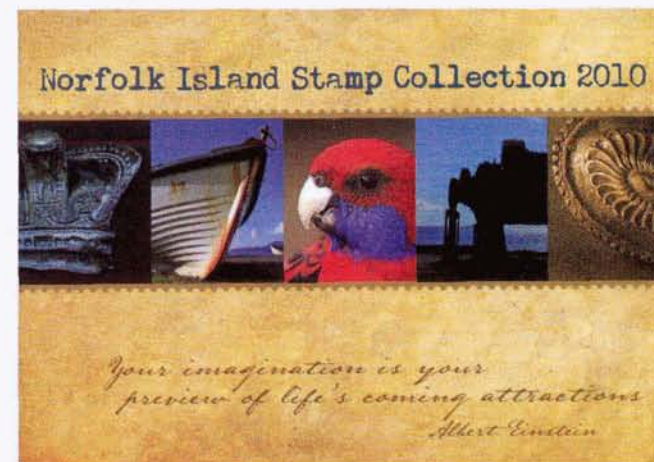
Over the past 12 months the staff at the Bureau have been focussed on producing stamps that present the history and lifestyle of Norfolk Island for our customers. We try at all times to provide a high quality service however there may be something that our customers would like to see more or less of. Your feedback on our issues would be appreciated.

Issues for 2011

Norfolk Island Museum Artefacts Part 2 – Definitive, Seashells found on Norfolk Island Shores, National Parks, World Heritage, 80 Years of Policing in Norfolk Island, 2011 Christmas Issue, 2011 Year Book.

All issues are subject to change.

2010 Year Book - NOW AVAILABLE



TECHNICAL DETAILS
Year Book Value: \$50.00
Designer: Mary Butterfield
Printer: Southern Colour Print NZ
Print Qty: 700

2011 Calendar Cards



TECHNICAL DETAILS

Issue Date: 22 February 2011
Values: 15c, 60c, \$1.20, \$1.50, \$1.80, \$3.00
FDC Value: \$8.80 (inc. GST) Withdrawal Date: 22/03/11
Designer: Mary Butterfield
Sheet Layout: 50 stamps p/sheet – 2 panes 25
Printer: Southern Colour Print NZ
Print Qty: 40,000

NORFOLK ISLAND PHILATELIC BUREAU

PO Box 95
Norfolk Island 2899
via South Pacific
Phone: +6723 23344 / 23705
Fax: +6723 23636
Email: info@stamps.gov.nf
www.stamps.gov.nf

Disclaimer: Every effort is made to provide information that is accurate at the time of publication, however we reserve the right to make changes to stamp prices or alter details that may have appeared in the Bulletin, if necessary.