

Standing Order - Deposit Account Facilities

Collectors can automatically receive Norfolk Island Philatelic material by establishing a Standing Order.

Standing Orders operate on a deposit account system and items are forwarded as long as the client's account is in credit.

A minimum deposit of \$20 (Australian) is suggested to be maintained to ensure continuity of service.

All stamps are sold at their face value. Payment can be made by Money Order, Postal Order, Bank Draft or Bank Notes, Bankcard (Australian), Mastercard or Visa. Payment should accompany orders.

All drafts or cheques in currency other than Australian currency should include an additional \$2.50 (Australian) to cover the fee charged by banks for conversion.

Clients are advised of their credit balance with each despatch. At times, however, due to early processing of orders this advice might not include the latest remittance received.

20 cents will be charged for servicing each order. All orders are despatched postage free and those exceeding \$20 are despatched by registered mail. Orders of lesser values are despatched by registered mail at the client's request and expense. The registered post charge (international service) is \$10 per article plus postage, and security post charge (Australian service) is \$7 per article plus postage.

ADDRESS FOR ORDERS:
All order enquiries should be directed to:
PHILATELIC BUREAU MANAGER
NORFOLK ISLAND 2899 SOUTH PACIFIC

Stamps on Sale as at 1 May 1992

Issue	Value	Withdrawal Date
Shipping Definitives	5¢, 10¢, 70¢, \$2	
	45¢, 50¢, 65¢, \$5	
	75¢, 80¢, 90¢, \$1	c. 1994
	\$4.50, \$7.	to be advised
Booklets (shipping stamps)		
Pacific War	43¢, 70¢, \$1	9 June 1992
Education PSE's Nos. 29-32	48¢ ea (\$1.92 set)	when replaced
Aerogrammes No.6	60¢	when replaced
	41¢ (Aussiegram)	when replaced
Scenes Definitives	1¢, 2¢, 3¢, 5¢	1993



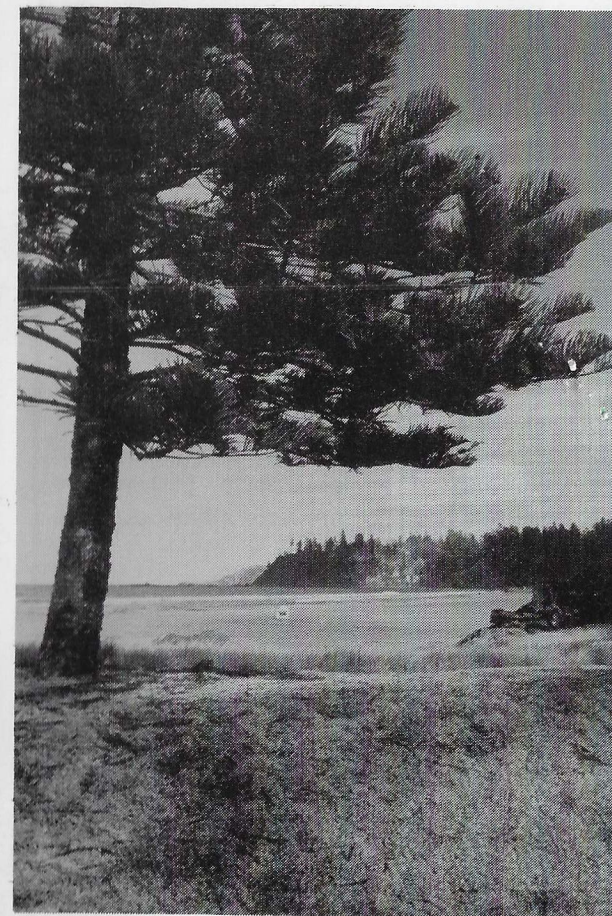
C.677

BY AIR MAIL
PAR AVION

Philatelic Bulletin
Norfolk Island Philatelic Bureau
Norfolk Island

NORFOLK ISLAND

Philatelic Bureau



Looking West, across Slaughter Bay

BULLETIN NO. 2 - APRIL 1992

Dear Customer

In five decades - two generations - the world has changed from a place of war to a place of peace. - Well, almost.

Those who experienced World War II, whether from the inside or the outside, remember the things that affected them most: the fears, the hardships, the excitements, the mateship, the sorrows. The five months from the opening of the Pacific War to the Coral Sea Battle is remembered as a period of unrelieved dismay and anxiety in Australia as week by week the prospect of invasion came closer without sign of it being stopped. The Coral Sea Battle on 4 May 1942, and the Battle of Midway a month later, were occasions when at last the advance of the Japanese invasion forces was slowed and the tide of war began to turn against them.

Insignificant in its remoteness, Norfolk Island barely had time to consider its sacrificial prospects before it had assumed a measure of strategic importance and became caught up in the web of frantic military preparation. There is no point in considering what might have been: the threat to the island was diminished, not increased, and Norfolk Island today celebrates how that came to be, with the issue of six appropriate postage stamps on 4 May 1992.

In the last bulletin it was mentioned that a date would be fixed for withdrawal of the 1¢, 2¢, 3¢ and 5¢ stamps of the Scenes definitive set. They will be kept in use throughout 1992.

Happy collecting !

Gil Hitch
Director of Postal Services

Coral Sea Battle & Battle of Midway 50th Anniversary

Technical Details:

Issue Date:	4 May 1992
Values:	
Coral Sea:	45c, 70c, \$1.05
Midway:	45c, 70c, \$1.05
FDC Price:	\$4.60
Designer:	Philatelic Studio, Melbourne.
Printer:	Leigh-Mardon Pty Ltd. Melbourne.
Paper:	Harrisons non-helicon
Process:	4 colour lithography
Stamp Size:	26 x 37.5 mm (vertical)
Sheet Format:	2 panes of 25 stamps
Withdrawal Date:	3 November 1992



FUTURE STAMP ISSUES

Guadalcanal 50th Anniversary

Technical Details:

Issue Date:	6 August 1992
Values:	45c, \$1.05, \$1.20
FDC Price:	\$2.90
Designer:	Philatelic Studio, Melbourne.
Printer:	Leigh-Mardon Pty Ltd. Melbourne.
Paper:	Harrisons non-helicon
Process:	Photo-litho 4 colour
Stamp Size:	37.5 x 26 mm (horizontal)
Sheet Format:	2 panes of 25 stamps
Withdrawal Date:	5 February 1993

CHRISTMAS 1992

29 October 1992 38¢, 45¢, 65¢, 85¢
(values subject to review)

TOURISM

23 February 1993 Five stamps
(values to be decided)

EMERGENCY SERVICES

18 May 1993 Four stamps
(values to be decided)

NUDIBRANCHS

7 July 1993 Four or six stamps
(values to be decided)