

## Dear Customer

Firstly, about STAMP BOOKLETS. You will recall that Bulletin No. 1 in January announced the introduction of a stamp booklet, containing ten 43¢ Ham Radio stamps. The booklet has proved popular at the Post Office and we have learnt that local letter writers to New Zealand, as well as those writing to Australia, would buy their stamps in booklets. The next will therefore contain 45¢ and 70¢ stamps, in separate booklets, each of 10 Shipping definitives. These should be on sale in December in time for the new 45¢ letter rate to Australia expected from 1 January 1992.

The Ham Radio issue appeared popular and with local stocks of the 43¢ stamp dwindling as withdrawal date approached ( 8 October ) it was advisable to discontinue making the booklets late in September. About 4,000 were made. Collector interest was evident, but not great.

Secondly, a reminder that the Scenes definitives will be withdrawn from sale 31 December 1991.

Happy collecting!

Gil Hitch  
Director of Postal Services

### PACIFIC WAR 50th ANNIVERSARY Technical Details

Issue Date: 9 December 1991  
Values: 43, 70¢, \$1  
FDC Price: \$2.33  
Designer: Philatelic Studio, Melbourne  
Printer: Leigh-Mardon Pty Ltd, Melbourne  
Paper: Harrisons non-helicon  
Process: Lithography  
Stamp Size: 37.5 x 26mm (horizontal)  
Perforations: 14.4 x 14.6  
Sheet Format: 2 panes of 25 stamps  
Withdrawal Date: 9 June 1992

43¢ Soldier & tank, jungle setting  
70¢ B17 Flying Fortress in jungle setting  
\$1.00 Warships



Apart from many volunteer enlistments in Australian armed services, Norfolk Island's domestic war history is not part of that of Australia, being involved instead with New Zealand in American Pacific War operations in the Solomon Islands and beyond. In the 50th anniversary years of that conflict, Norfolk Island is issuing postage stamps to commemorate events that are significant in its history, with issues on 9 December 1991, 4 May 1992 and 6 August 1992.

World War II was in its third year when on 7 December 1941 Japan without warning attacked American naval and air installations at Pearl Harbour in Hawaii, and simultaneously commenced invasions of Malaya, Thailand, the Philippines, Guam, Hong Kong and Wake Island.

British, Australian, Dutch and American forces were overwhelmed and Japanese forces occupied in rapid succession all countries between Australia and India, as well as a vast area of the Pacific. The first set-back to their advance did not occur until the Battle of the Coral Sea some six months later, followed in the next month by the Battle of Midway, when in June 1942 the balance of sea and air power was at last turned in the Allies favour, if only by the slimmest margin of time. Reversal of the Japanese advance did not commence until over a year after the Pacific War began, when American forces drove the Japanese from Guadalcanal. Completion of the process, and the war was to occupy another two and a half years of constant savage battle on sea and land and in the air.

In the path of the then rapidly advancing war lay Norfolk Island, thinly garrisoned and with many Islanders away serving in European and Mediterranean theatres of war, and some already captured by the Japanese at Singapore. Not all were to survive the fighting or their treatment as prisoners of war. In Norfolk Island the emergency construction of an airfield was part of the overall plan to halt the Japanese at Guadalcanal. Aircraft could then be flown from New Zealand to the battle zone to assist in the retaking of Guadalcanal and islands further north. Norfolk Island itself was spared the horrors of battle, but this eventual fact was still not certain as late as a year after the initial threat. Today, the airfield is a memorial to all who fought to secure victory and peace.

### FUTURE ISSUES 500th Anniversary of the Discovery of America

Technical Details:

Issue Date: 11 February 1992  
Values: 45¢, \$1.05, \$1.20  
FDC Price: \$2.90  
Designer: Philatelic Studio Melbourne  
Printer: Leigh-Mardon Pty Ltd, Melbourne  
Paper: Harrisons non-helicon  
Process: 4 colours lithography  
Stamp Size: 37.5 x 26 mm (vertical)  
Sheet Format: 2 panes of 25 stamps  
Withdrawal Date: 10 August 1992

### Coral Sea Battle & Battle of Midway 50th Anniversary

Technical Details:

Issue Date: 4 May 1992  
Values:  
Coral Sea: 45¢, 70¢, \$1.05  
Midway: 45¢, 70¢, \$1.05  
FDC Price: \$4.60  
Designer: Leigh-Mardon Pty Ltd, Melbourne  
Printer: Philatelic Studio, Melbourne  
Paper: Harrisons non-helicon  
Process: 4 colour lithography  
Stamp Size: 26 x 37.5 mm (vertical)  
Sheet Format: 2 panes of 25 stamps  
Withdrawal Date: 3 November 1992

## Standing Order- Deposit Account Facilities

Collectors can automatically receive Norfolk Island Philatelic material by establishing a Standing Order.

Standing Orders operate on a deposit account system and items are forwarded as long as the client's account is in credit.

A minimum deposit of \$20 (Australian) is suggested to be maintained to ensure continuity of service.

All stamps are sold at their face value. Payment can be made by Money Order, Postal Order, Bank Draft or Bank Notes, Bankcard (Australian), Mastercard and Visa. Payment should accompany orders.

All drafts or cheques in currency other than Australian currency should include an additional \$2.50 (Australian) to cover the fee charged by banks for conversion.

Clients are advised of their credit balance with each despatch. At times, however, due to early processing of orders this advice might not include the latest remittance received.

20 cents will be charged for servicing each order. All orders are despatched postage free and those exceeding \$20 are despatched by registered mail. Orders of lesser values are despatched by registered mail at the client's request and expense. The registered post charge (international service) is \$10 per article plus postage, and security post charge (Australian service) is \$A7 per article plus postage.

### ADDRESS FOR ORDERS:

All order enquiries should be directed to:  
**PHILATELIC BUREAU MANAGER**  
**NORFOLK ISLAND 2899 SOUTH PACIFIC**

## Stamps on Sale as at 1 October 1991

Issue	Value	Withdrawal date
Shipping Definitives	5c, 10c, 70c, \$2, 45c, 50c, 65c, 65c, 75c, 80c, 90c, 90c, 1.10	c.1993
Ham Radio	43c, 1.10, 1.20	c.1994
Museums	43c, 70c, \$1, \$1.20	8 October 1991
Islanders III Pandora	\$1, \$1.20	15 November 1991
Christmas 1991	38c, 43c, 65c, 85c	2 January 1992
Education PSE's	48c ea (\$1.92 set)	23 March 1992
Nos 29-32		when replaced
Aerogrammes No.6	60c	when replaced
	41\$ (Aussiegram)	when replaced
Scenes Definitives	1c, 2c, 3c, 5c,	31 December 1991
(On sale only at	15c, 30c, 37c, 40c,	"
Philatelic Bureau)	50c, 60c, 80c, 90c,	"
	\$1, \$2, \$3, \$5,	"
	Pack \$17.20	"



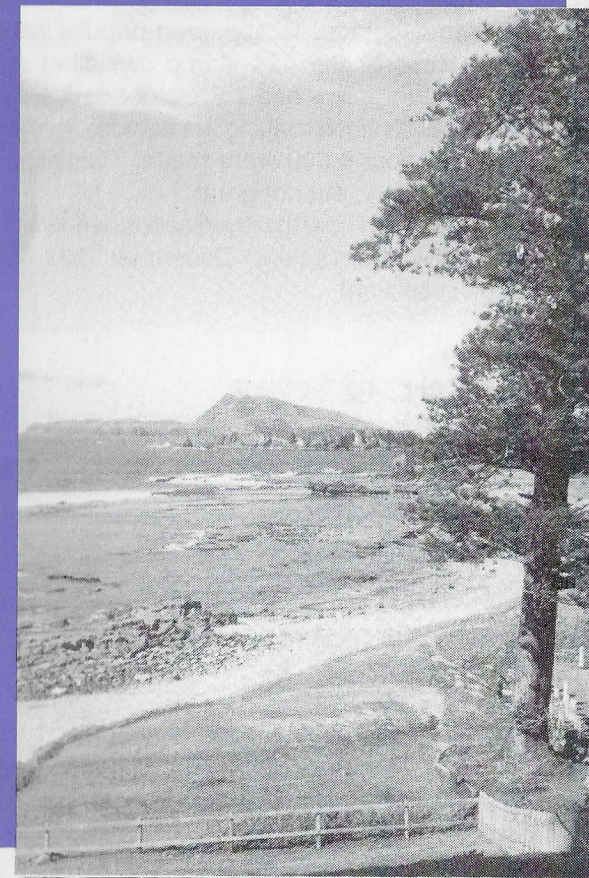
C.677

BY AIR MAIL  
PAR AVION

Philatelic Bulletin  
Norfolk Island Philatelic Bureau  
Norfolk Island

## NORFOLK ISLAND

# Philatelic Bureau



Cemetery Beach with Nepean & Philip Islands beyond

**BULLETIN NO. 4 - OCTOBER 1991**