

Norfolk Island Philatelic Bureau

Stamps 2002

Nuffka

The Norfolk Island Sacred Kingfisher was called Nuffka by the Pitcairners as their way of saying Kingfisher in their language. It is the same species as the Kookaburra, this bird belongs to the subspecies of *Halcyon sancta* vagas – common to Lord Howe Island and New Zealand. This booklet contains 10 stamps printed on Norfolk Island locally to cover internal postage.

Advertising on the rear of the booklet cover helped defray the costs of production. This advertisement features the restaurant at Norfolk's newest hotel, The Governor's Lodge. The restaurant is named the Postmaster's Grill after Dave Bailey, the Island's longest serving Postmaster, of 27 years



Technical Details

Issue Date:	15 January 2002
Booklet:	\$2.00
FDC:	70c
Stamp Size:	30 x 30mm
Printer:	Photopress International Norfolk Island
Paper:	Pancake aqueous gummed
Quantity:	240,000
Booklet:	6,000

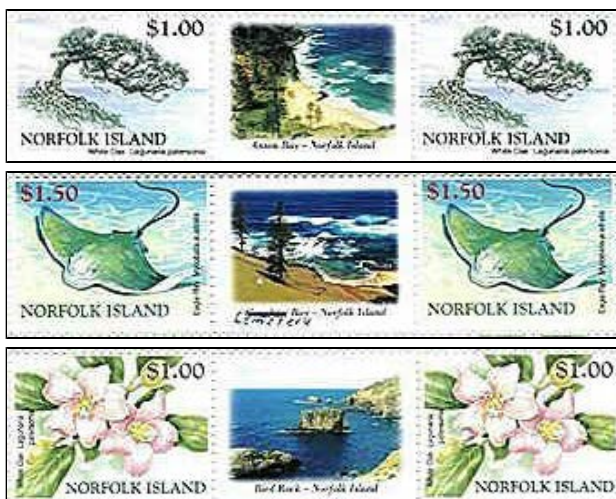
Cliff Ecology

The landscape of Norfolk island is surrounded by highcliffs, rising majestically from the Pacific Ocean over which they tower. The prominent vantage points carry such delightful names as "Puppy's Point", "Headstone" & "Cascade" to name just a few. From the high cliffs you can view beauty spots such as Anson Bay, Cemetery Bay, Cathedral Rock and the Cord. The evolution of these cliffs & their constant changes in fauna & flora are just one of the delights of Island living.



Technical Details

Issue Date:	21 January 2002
Values:	45c, \$1.00, \$1.00, \$1.50
FDC:	\$4.45
Stamp	

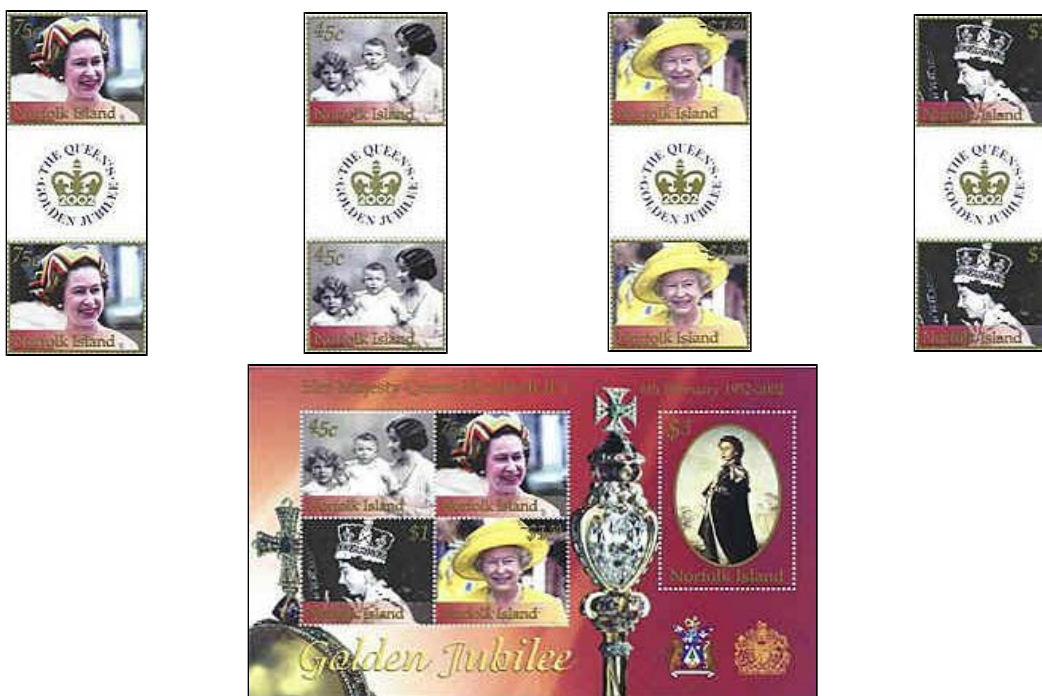


Size: 34mm x 26mm
 Printer: Cartor, France
 Paper: 102gsm security paper with PVA gum
 Perforation: 14
 Gutters: Anson Bay, The Cord, Bird Rock, Cemetary Bay
 Quantities: 25,000 each denom

Her Majesty Queen Elizabeth II's Golden Jubilee

On the 6th February 1952, King George VI, the Queen's father passed away at Sandringham, England. Her Majesty Queen Elizabeth II is the forty-second Sovereign of England since the Norman Conquest, and the sixth Sovereign Queen.

The Queen visited Norfolk island on 11 February 1974. Arriving on the Royal Yacht Britannia, she was the first Monarch to ever visit the island. On this occasion she was accompanied by Prince Philip, Princess Anne, Captain Mark Phillips and the late Lord Louis Mountbatten. She unveiled a commemorative plaque on the knoll overlooking Government House, Kingston.



Technical Details

Issue Date:	6 February 2002	
Layout & Design:	Andrew Robinson	
Values:	Stamps:	45c, 75c, \$1.00, \$1.50
	FDC:	\$4.20
Souvenir Sheet:	Stamps:	\$6.70
	FDC:	\$7.20

Printer:		The House of Questa, U.K.
Process:		5 colour lithography
Sizes:	Stamps:	30.56mm x 38mm
	Souvenir Sheet:	95mm x 162mm
Gutter:		Official Jubilee Logo
Perforation:		14
Paper:		CA Spiral Watermark
Quantities:	Stamps:	80,000 each value
	Souvenir Sheet:	40,000

The Age of Steam

During the early part of the 20th Century a few steam-powered engines were brought to the island. Most were used to power sawmills to saw up the huge logs from the Norfolk Island Pines.

One particular engine, still on the original site of the sawmill was a Ruston Proctor, tropical version, was imported by Mr. Yeaman. The engine, weighing a massive 5 tons was shipped from New Zealand around 1914.

The stamp depicts the front wheel of the now ruined but rustic engine.

Technical Details:



Issue Date:	21 March 2002
Stamp:	\$4.50
FDC:	\$5.00
Stamp Size:	36mm x 25mm
Perforation:	14
Paper:	102gsm gummed Security Paper
Artwork:	Roger Pennycuik (Norfolk Island)
Printer:	House of Questa, U.K.
Quantity:	40,000

6th South Pacific Mini Games

These Games were held for the first time on Norfolk Island in December, with approximately 1,000 athletes plus supporters participating. The island was bursting at the seams to accommodate them all. There were 10 events and these are featured in two Souvenir Sheets and 2 stamps. The events are Triathlon, Netball, Bodybuilding, Clay Target Shooting, Squash, Lawn Bowls, Tennis, Golf, Archery and Athletics. The sheets are designed by Glenn Douran and the single stamps by Tracey Yager and Photopress International.

Technical Details:

Values:	50c, \$1.50, 45c x 4, \$1.00 x 4
StampSize:	30mm x 35mm
Sheet size:	145mm x 94mm
FDC:	Stamps \$2.50
Sheetlets:	\$2.30, \$4.50



Perforation: 14

Paper: 102gsm gummed Security Paper

Printer: House of Questa, U.K.

Quantity: 30,000 Single stamps
20,000 Souvenir sheets

Bounty Bowls

Lawn Bowls are a popular pastime on Norfolk Island. The Bowling Club is situated in the heart of the Burnt Pine shopping centre, and sponsors the Bounty Bowls Tournament every year. Bowlers come from far afield to try their skill and enjoy the traditional island hospitality. An event on the Norfolk sports calendar not to be missed.



Technical Details:

Issue Date: 6 May 2002

Value: Stamps: 10c
Booklet: \$2.00

Printer: Photopress International, Norfolk Island

Philip Island Flowers (Part 1)

Philip Island & its plant life is slowly recovering after almost 200 years of ravaging by feral animals, which were eradicated in the late 1980's. It is a wonder that any of these native plants survived for us to enjoy their beauty today. After much research into the plants on this rugged and isolated island 6km south of Norfolk and with the help of Owen & Beryl Evans, Mary Butterfield has once again produced a colourful, accurate and attractive issue.



Technical Details:

Issue Date: 21 May 2002

Values: 20c, 40c, 45c, 95c, \$2.00, \$5.00

FDC: \$9.50

Stamp Size: 25.5mm x 36mm

Sheet Layout: 50 stamps in 2 panes of 25

Design: Mary Butterfield, Norfolk Island

Printer: Southern Colour Print, Dunedin, NZ

Quantities: 150,000 45c; 50,000 other values

Commonwealth Games

Norfolk Island is sending a team to compete in the Commonwealth Games to be held in Manchester, England in July/August 2002. We are being represented in four sports - Lawn Bowls, Shooting, Athletics and Triathlon. The Philatelic Bureau is located near the main training ground for the athletes, & we wish them all the best for the upcoming competition.

Norfolk has been given permission to use the official Games logo within our stamp designs. The stamp artwork was completed by Glenn Douran and lay-up by Photopress International, Norfolk Island.



Technical Details:

Issue Date: 25 July 2002
Values: 10c, 45c, \$1.00, \$1.50
FDC: \$3.55
Stamp Size: 26mm x 36mm
Artist: Glenn Douran, Brisbane, Australia
Printer: Southern Colour Print, Dunedin, NZ
Quantities: 30,000 each value

Philip Island Flowers (Part 2)

This issue, again designed by Mary Butterfield, features another 6 flowers from the isolated Phillip Island, 6 kilometres south of Norfolk Island. Since the eradication of the feral animals in the early 1980's the island has seen remarkable regrowth, assisted by the planting and managing of native species by the Australian National Parks and Wildlife Service.



Technical Details:

Issue Date: 18 September 2002
Values: 10c, 30c, 50c, \$1.00, \$1.50, \$3.00
FDC: \$7.00
Stamp Size: 25.5mm x 36mm
Sheet Layout: 50 stamps in 2 panes of 25
Design: Mary Butterfield, Norfolk Island
Printer: Southern Colour Print, Dunedin, NZ

Sperm Whale (Joint Issue with New Caledonia)

Near neighbours New Caledonia and Norfolk island (only 600 km apart) have combined to produce this special issue to highlight our maritime connections, featuring the Sperm Whale.

This species annually migrates past both our shores. The artist, Jean-Richard LISIAK from Noumea has completed the artwork and Norfolk Island has the privilege of being able to use the design. The FDC will include the stamps from both Administrations, and will be able to be purchased from both.





Technical Details:

Issue Date:	18 September 2002
Values per set:	\$1.00 x 2
Sheetlet value:	\$10.00
FDC Value (N.I.):	\$2.50
Joint FDC Value (N.I.):	\$4.50
Design:	Jean-Richard LISIAK, New Caledonia
Printer(N.I.):	Southern Colour Print, Dunedin, NZ
Layout:	1 Sheetlet contains 5 strips

Alliance Airlines - First Flight to Norfolk Island

Presenting the First Flight Cover commemorating Alliance Airlines' first flight to Norfolk Island



Price: \$2.00

Christmas 2002

This issue features the beautiful White Tern, which returns to Norfolk each summer to breed. An amazing bird, hatched without a nest to protect it, instead it grips the bark of the Norfolk Pine limb & hangs on for months, through all weathers until it fledges. It then flies out to sea where it will remain in flight until it matures up to 4 years later, when it will return to Norfolk to find a partner for life & begin the cycle again.

Roger Pennycuik of Norfolk Island has designed the stamps. He has captured the birds beautifully, & the selection is appropriate as they breed at Christmas time and are our "doves of peace".



Technical Details:

Issue Date:	12 November 2002
Values:	45c, 45c, \$1.00, \$1.50
FDC:	\$4.10
Design:	Roger Pennycuik, Norfolk Island
Printer:	Southern Colour Print, Dunedin, NZ
Stamp Size:	38.5mm x 30mm
Layout:	2 panes of 25 stamps - 50 stamps/sheet
Quantity:	30,000 sets