

**Classic Cars**



The cars depicted in this issue are well-loved models dating from 1952 to 1971 and are kept in pristine condition. These cars are used for weddings and street parades and on occasion the 1971 Rolls Royce, Silver Shadow, can be hired out to do a scenic tour around the Island and is chauffeured by David (Kik) Quintal, a well-known local identity who loves to tell the history of his Island home.

All cars are owned by local car buffs and have been imported into the Island over the years.

This issue was designed by Mary Butterfield.

**Faces Of Norfolk Island**



This stamp issue is very special, depicting Norfolk Island identities, all of them able to trace their lineage back to Pitcairn Island. Each of these identities has a story.

Colin Lindsay Buffett known as Boonie, was born in Norfolk Island in June 1926. He was a sixth generation Pitcairn Descendant. Boonie was a member of the RAAF during World War II. He trained in Sydney as a Plumber and Gas Fitter under the Post-war training scheme and became a Master Plumber. Boonie married Heather Kidd in 1946 and they had three daughters, Colleen, Coral and Alma. Boonie worked as a Master Plumber both in Sydney and in Norfolk Island and he worked at the Whaling Station in Cascade before joining the Administration of Norfolk Island in 1962. He held various positions with the Administration culminating as Senior Works Supervisor. Boonie had many talents; he was a good sportsman, gardener, carpenter and woodturner.

Darlene Buffett, is a resident of Norfolk Island. Darlene was born and raised here in the island. She works full time as Secretary to the Administrator of Norfolk Island. Darlene is a keen golfer and a local identity on Radio Norfolk (VL2NI). Darlene is very much a family first woman and a keen gardener and golfer she also loves spending time fishing. You can often see Darlene on the weekends riding around the island on her much loved Triumph Bonneville.

Tane Grube, a local girl with a Pitcairn connection. Tane grew up partially in mainland Australia and Norfolk Island. After completing her education she returned to Norfolk Island. Since returning to the Island Tane and her partner have welcomed the arrival of their son. This stamp depicts 2 generations of Norfolk Islanders and reflects the strong family bonds that are present here in the Island.

Andre Nobbs, had the advantage of a Norfolk Island education, and the many and varied experiences that only growing up on a small Island can give. Andre is a talented musician and his life experiences are often reflected in his song writing, playing and performing. Like a lot of young islanders, Andre's further education and employment have taken him off island to mainland shores. He jokes that his sense of humour is derived from his time in the Air Force and then to the work force and places around the globe. Andre now resides on Norfolk Island with his wife and family. In 2007 he was elected to the office of Chief Minister with the Norfolk Island Legislative Assembly.

## A Jewish Resting Place in Norfolk Island



This issue is being released to coincide with the World Stamp Championship 2008 Israel. This event is to be held in Tel Aviv between May 14 and 21.

Over the years a number of Jewish people have found their way to Norfolk Island. Some stayed and made a home for themselves others moved back to the mainland.

This issue depicts the resting place of those who chose to stay.

Carl Hans Nathan Strauss (affectionately known as Charlie), first visited Norfolk Island in 1966. Charlie fell in love with Norfolk Island during this visit and returned to Australia and sold his business interests before returning permanently in 1967.

Charlie was forced to leave Germany for England in 1934 because of Nazi persecution. He was interned in 1940, subsequently being shipped from Liverpool, England on the infamous ship "Dunera", landing in Sydney in September 1940. The internment continued in Hay, NSW for approximately a year and a half. Charlie made a lot of friends in Norfolk Island. He was a great epicurean and loved to dine out often. Charlie was well cared for by his many friends until he passed away on 30th November 1993.

Meta and Johann (John) Kienhuize first came to Norfolk Island in the early 1970s. It was always the wish of John to retire to an Island and following the holiday, the destination was chosen.

Prior to their life in Norfolk Island both Meta and John had travelled to Australia from European and Asian destinations. Meta arrived in Australia with her daughter and peers in January 1939 prior to the outbreak of the 2nd World War.

John travelled to Australia from China where he was working with a Perfume company.

John and Meta met in Australia and in 1958 they were married.

John and Meta opened a business here on the Island called "Casa Kui", selling fine china and jewellery. The shop is still operating today but under new ownership.

Meta had a treasured shell collection that she brought to the Island and later donated to a local museum. Unfortunately the museum was destroyed by fire and the shell collection was lost forever.

Meta was an avid reader and her book collection reflected her interest in so many subjects. On her death her daughter, Vera, donated all of her books to the local library.

John passed away in 1975 and Meta passed away in 1978.

Sally Kadesh came to Norfolk Island as a widow in the late 1960s.

She was Jewish but came to Norfolk Island from the United Kingdom where she and her husband were in business.

During her time in Norfolk Island she lived for sometime in one of Bernie and Mary Christian-Bailey's tourist apartments on a semi-permanent basis until her home in the Kingston Arthur's Vale Historic Area was completed.

Sally paid for the restoration of No. 5 Quality Row, and in return had a life interest in it.

Sally furnished her historic home with antique furniture she brought with her from England. After her death her daughter sent most of the furniture back to England.

During the visit of Queen Elizabeth II, the Duke of Edinburgh, Princess Ann, Captain Mark Phillips and Lord Louis Mountbatten, they visited Sally's restored home in Quality Row, Kingston.

Sally passed away in the early 1980s.

This issue was designed by Tracey Yager.





### Calves of Norfolk Island



Cattle have an interesting role in life on Norfolk Island. Tourists on arrival are warned that hitting a cow can incur a heavy fine.

Until approximately 20 years ago cattle wandered freely through the shopping centre, cars would have to slow right down or stop to allow them an unimpeded passage to their final destination. They were renowned for leaving their "calling cards" outside many of the local businesses or just standing peering through shop windows.

The shopping centre underwent a beautification program some years back and cattle grids were placed at all entrances to the shopping centre and there ended the days of cows roaming freely down the main street.

The cows still have access to all other parts of the island and tourists still have to remain vigilant when driving, especially at night when the black cows are roaming the roads.

This issue was designed by Haylee Fieldes.

### 25th Anniversary of St John Ambulance in Norfolk Island



St John Ambulance celebrates 25 Years in Norfolk Island this year. The Division was established in 1983 following a visit to the Island by then Chief Surgeon, Dr Brian Ancell.

Due to the uniqueness of Norfolk Island's needs a senior Ambulance Officer from the South Australian St John Ambulance service visited the Island to assess the Divisions requirements.

This included the Ambulance service providing volunteers to assist with skilled assistance, care and transport in addition to the usual teaching of first aid courses, first aid duties and support from local community minded people.

Bonnie Quintal, MBE, a retired local nursing sister was appointed the Divisional Superintendent in 1983. Bonnie trained volunteers from the community in Senior First Aid and carried out her role with dedication over a period of 25 years.

### Rare Endemic & Indigenous ferns of Norfolk Island



The Norfolk Island forest has some excellent examples of the original subtropical varieties. Plants needed to cross vast distances over water to colonise Norfolk Island and nearby Nepean and Phillip Islands and because of this the island group had just 178 native plant species at the time of settlement in 1788.

Those plants that did manage to establish themselves in this island group were able to exploit Norfolk Island's favourable environment. In time some evolved features which better suited their changed circumstances that became unique (endemic) to the island. Norfolk Island is the home of the majestic Norfolk Island Pine and some 40 other endemic plants including a variety of ferns. These are a source of considerable interest to scientists and botanists in that they can be found nowhere else occurring naturally.

The designer of this issue is Mary Butterfield.

### Ships Built on Norfolk Island



This issue depicts 3 stamps of three sea going vessels built on Norfolk Island.

The first of these ships built was the Sloop Norfolk in 1798 and a model of this ship can be viewed in our Museum at Kingston and was a generous donation by Col Gibson.

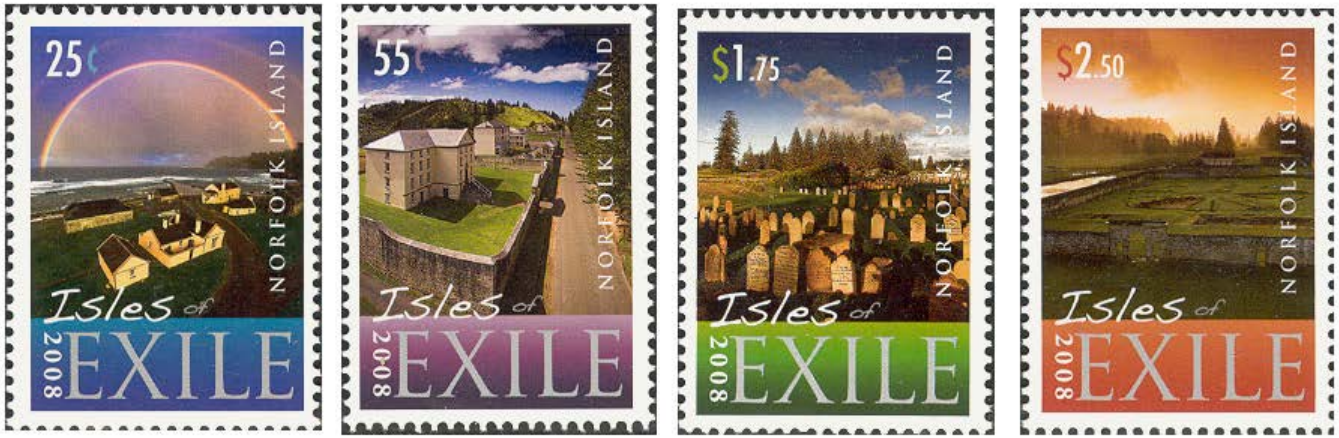
The other two ships built on Norfolk were the Schooner Endeavour built in 1808 and the Schooner Resolution built in 1925.

These ocean going vessels, built of Norfolk Island pine, survived remarkably well for 20 or more years and the artwork in watercolour is a tribute to the craftsmanship of each vessel.

The designer of this issue is Tracey Yager.

### Isles of Exile





This stamp issue has come about as a result of the Isles of Exile Conference to be held on the Island from 26-29 October 2008.

Islands have been favoured as places to incarcerate or exile those who incurred official disfavour and Islands provide natural barriers to escape.

Norfolk Island has been used both as a prison and voluntary exile and it is this heritage that links it with other islands of the Pacific. Islands such as Tasmania, New Caledonia, Guam, Jeju (Korea) just to name a few.

There is also the Island of Molokai (Hawaii) that was made a “leprosarium” because of its natural inaccessibility making it a perfect quarantine zone.

From a heritage perspective, Robben Island, where Nelson Mandela was held, was declared a World Heritage site by UNESCO in December 1999.

The designer of this issue is Robin Nisbet.



#### Christmas 2008



Christmas on Norfolk Island is a time for families to return and celebrate the festive season.

This issue depicts traditional Christmas nativity scenes superimposed on a background of Norfolk Island Scenery.

The designer of this issue is Tracey Yager.

